

MVS-32/33/34 Series

Miniature Basic Switch

◆ Features

- ✓ Standard transparent miniature, and durable, switch for mass application
- ✓ Positive Opening contacts
- ✓ #250 Quick connect, M3 Screw, and Solder terminals
- ✓ Tin-plated brass terminals for better oxidation resistance

◆ Recognition(s)

- ✓ CE – EN60947
- ✓ CSA – 6241 90
- ✓ RoHS Compliant
- ✓ Reach Unaffected



◆ Characteristics

| Positive Opening | Electrical Contact | Terminal Type | Contact Form(s) | Poles & Throws | Actuation Sequence(s) |
|------------------|--------------------|--|-----------------|----------------|-----------------------|
| Yes | 3 Points | Screw (M3), or Quick Connect (#250), or solder | Form C | SPDT Snap | Break(1) Make(2) |

| Operating Temp. | AC Rated | DC Rated | IP | Oil Resist | Dust Resist | Water Resist | Operating Speed |
|-------------------|--------------|-----------|----|------------|-------------|--------------|------------------|
| -40 to 85 Celsius | 6A 125V-250V | 0.5A 125V | 40 | No | No | No | 0.01mm to 1m/sec |

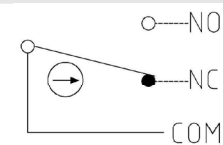
| Operation Frequency | Contact Resistance | Insulation Resistance | Vibration |
|--|---------------------|-----------------------|----------------------------|
| Mechanically: 60/min Electrically: 30/min | 30mΩ max. (initial) | 100MΩ min. (500VDC) | 1.5mm amplitude at 10-55Hz |

| Storage Humidity | Service Life (min.) | Dielectric Strength |
|------------------|---|--|
| 85% RH max | Mechanically: 10,000,000 operations Electrically: 500,000 operations | 1000VAC, 50/60Hz for 1 minute between non-continuous terminals |

Recommended tightening forces

| Purpose | Screw type | Tightening |
|-----------------|------------|---------------|
| Mounting | M3 | 0.39~0.59 N·m |
| Screw terminals | M3 | 0.25±0.05 N·m |

Circuitry



◆ Materials

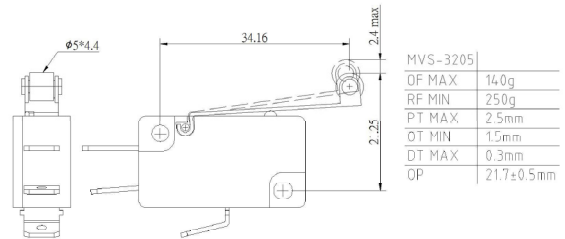
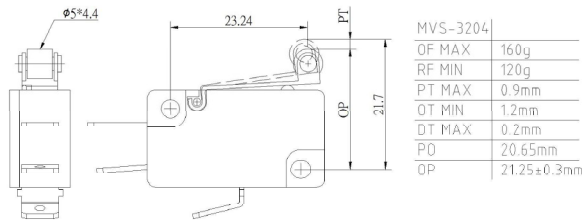
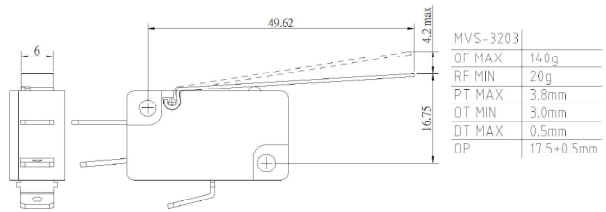
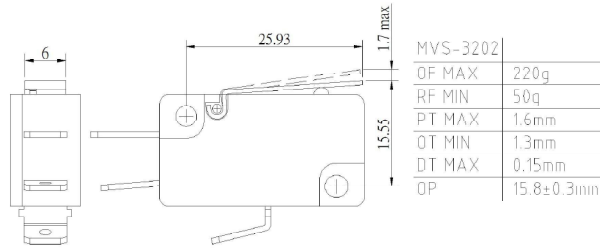
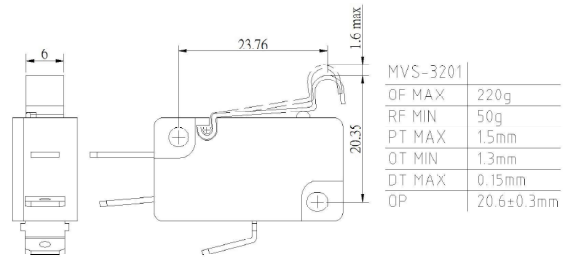
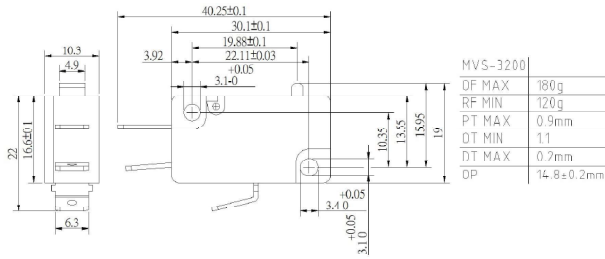
| Actuation touch part | Electrical contact point | Enclosure |
|--|--|------------|
| Stainless Steel SUS304 (levers), or Nylon+glass fiber (plungers), or POM (rollers) | Silver-Nickel Alloy <u>Custom:</u> Gold-plated Silver-Nickel Alloy | PC Plastic |

◆ Nomenclature

| Series: | Terminal Type: | Actuator: |
|--------------|---|---|
| MVS – | 32 | 00 |
| | 32=#250 Quick Connect 33=M3 Screw 34=Solder | <u>Touch part, Plastic</u> 00=Nylon pin plunger 04=POM roller lever 05=POM roller lever, long <u>Touch part, Stainless Steel</u> 01=SUS304 simulated roller lever 02=SUS304 lever 03=SUS304 lever long |

◆ Dimensions & Operating Characteristics

*Terminal types do not affect actuator operating characteristics
 *Measurements in *millimeters*


MVS-3200

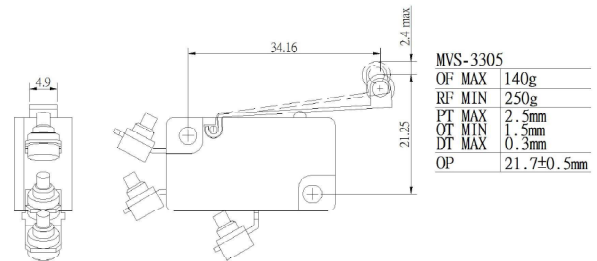
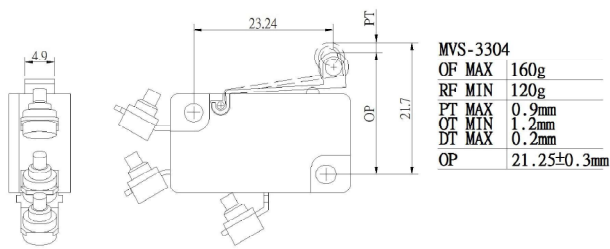
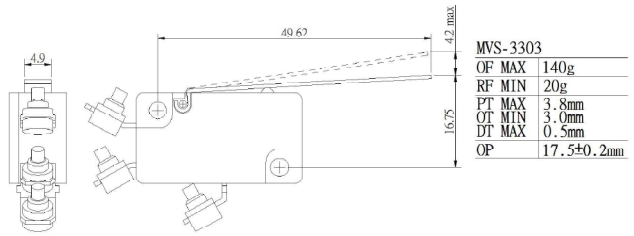
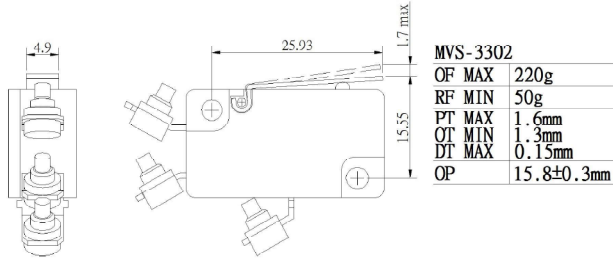
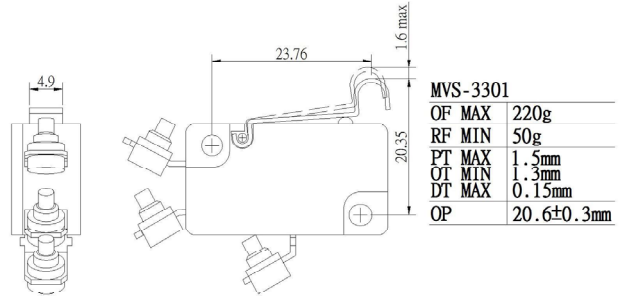
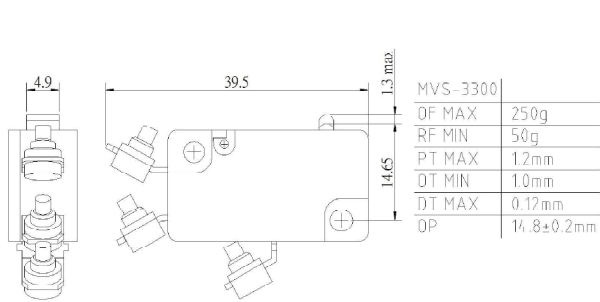
MVS-3201

MVS-3202

MVS-3203

MVS-3204

MVS-3205

MVS-32/33/34

MVS-3300

MVS-3301

MVS-3302

MVS-3303

MVS-3304

MVS-3305